

# HYBRID

TOILET SYSTEM

## **Non Flush Pedestal**

**Compliant with AS 1428.1**

*Assembly & Installation Instructions*

**All instructions are referenced to the drawings provided**



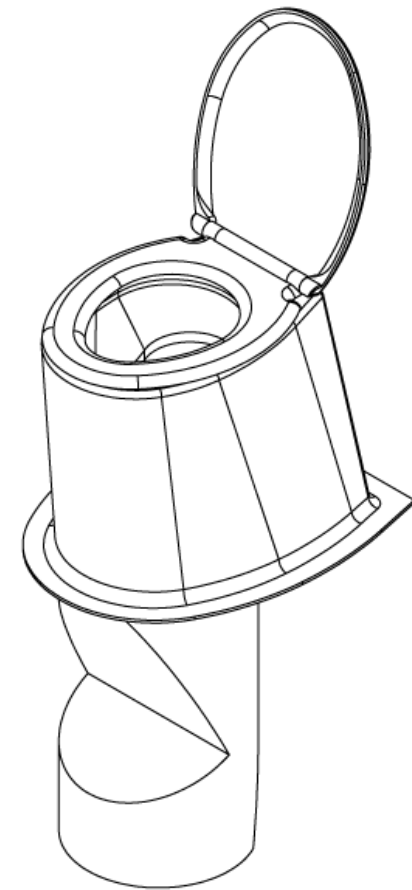
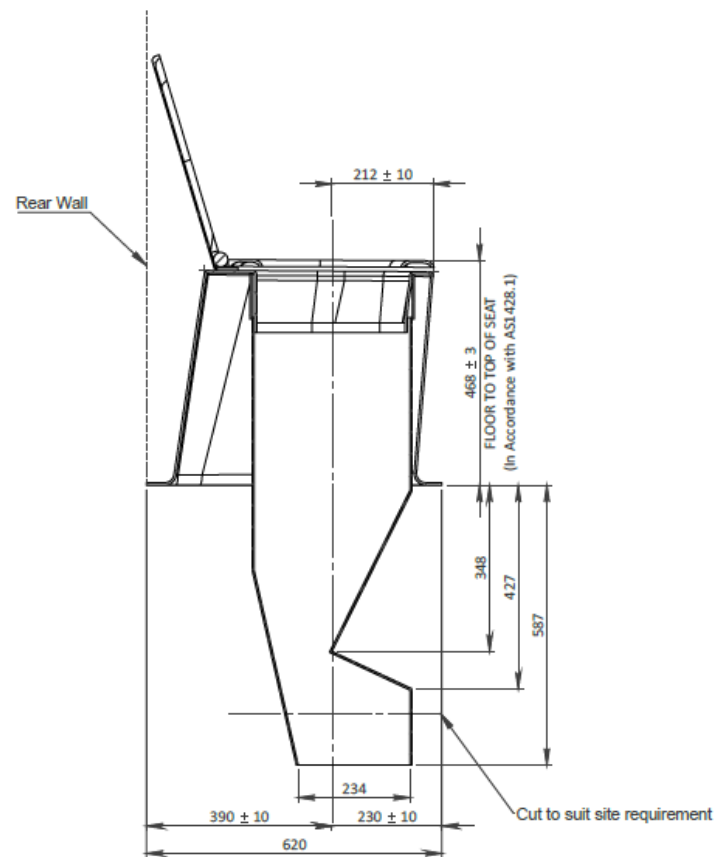
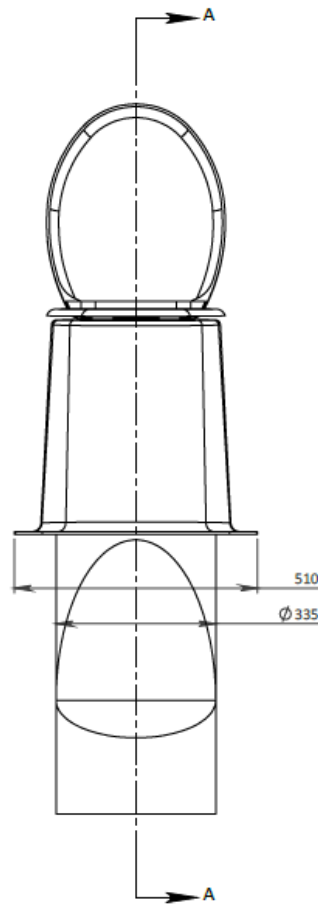
## ***INSTALLATION***

1. Refer to drawings **ENV-NFP-001, GTL-0000-12 & GTL-0000-12D** for **STANDARD & PWD** installation of pedestal and dropper tube.
2. Position, mark and cut a 350mm dia. hole in the cubical floor for the dropper tube.
3. Slide the dropper tube down onto the primary tank lid. Plumb the tube and trace around the tube on the lid with a marker pen. Using a jigsaw, cut around the inside of the line to make the hole in the tank lid.
4. Slide the dropper tube down through the floor and engage it in the tank lid. It should only penetrate the lid a **maximum of 20mm**. If necessary, stick a screw or two out of the dropper to stop it hanging too low in the tank. **The 20 mm maximum is necessary to avoid build up of paper and waste in the dropper tube.**
5. Inside the cubicle measure 432mm above the floor level and mark. Cut off the dropper tube to suit.
6. Use the in-fill piece to seal any remaining holes where the dropper tube and floor meet. Cut this to the size required and seal with sealant provided at the same time.
7. Install the toilet seat and lid, tightening the wing nuts from the underside of the toilet pedestal.
8. Install the toilet pedestal by placing it over the dropper tube. Square the pedestal to the wall and screw it to the floor using 6 x 15 gauge 1.5" stainless steel screws.
9. Now, seal the gap between the primary tank and the dropper tube.
10. Finally, check that all fixings are secure and that there are no leaks.

**GOUGH  
PLASTICS**

# NON FLUSH DROP ASSEMBLY

**TOLERANCES**  
UNLESS NOTED OTHERWISE  
PLEASE ALLOW BELOW TOLERANCES  
DIMENSIONS <200mm - ALLOW ± 5 mm  
DIMENSIONS 200 - 1000mm - ALLOW ± 10 mm  
DIMENSIONS >1000mm - ALLOW ± 15 mm



SECTION A-A

**AS BUILT**

1	9/03/2021	AS BUILT	MC	DH	
0	12/05/2021	MODIFIED MOULD - HEIGHT ADJUSTED	MC	DH	
REV	DATE	REVISION DESCRIPTION	DRAWN	CHKD.	ENG.

**GOUGH  
PLASTICS**

A.C.N. 010 028 547  
Gough Industries Pty. Ltd.  
833 Ingham Road  
Bohle, Townsville  
P.O. Box 7570, Garbutt BC, Qld. 4814.  
Telephone 07 47747506  
www.gough.com.au

CLIENT LOGO.

Non Flush Assembly

SCALE  
NTS A3

GOUGH PLASTICS DRAWING No.

ENV-NFP-001

REVISION  
2

SOLIDWORKS: S:\Solidworks\Environmental\Hybrid Toilet Systems\Non Flush Pedestal\Non Flush Assem

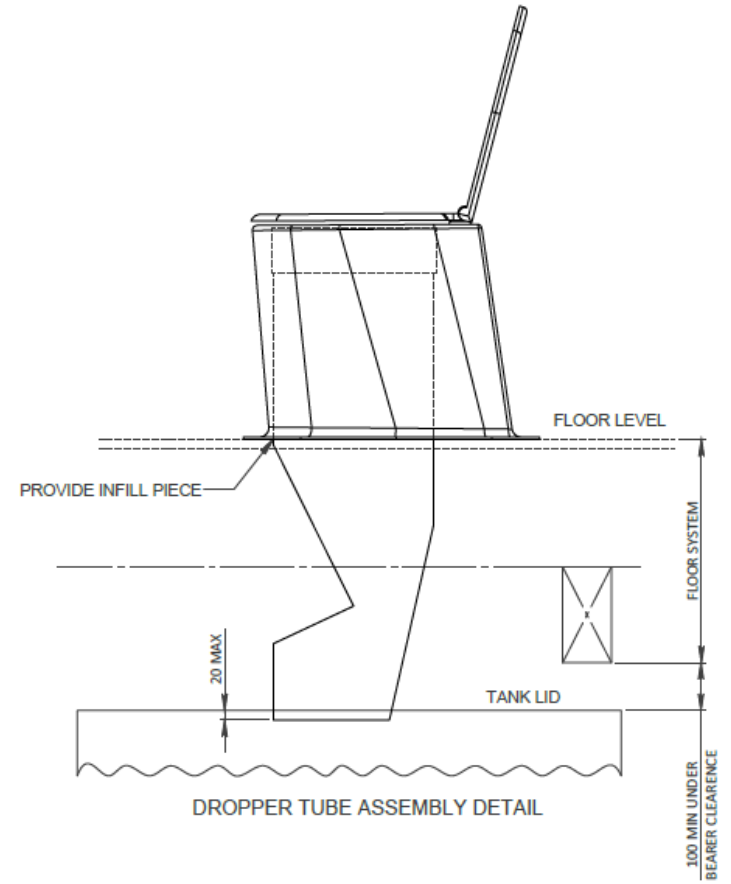
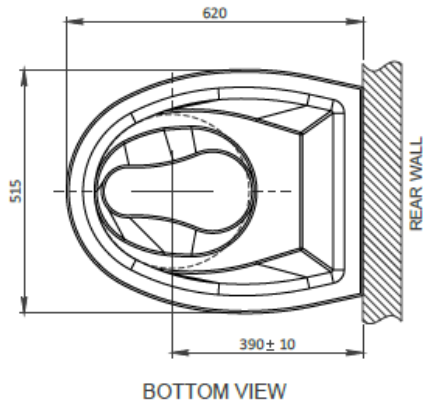
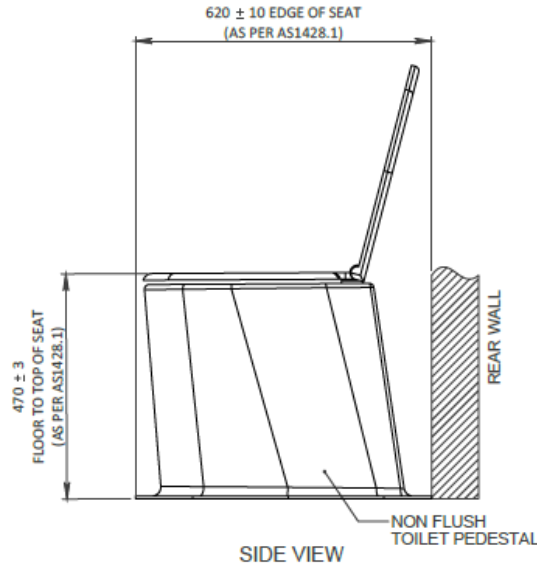
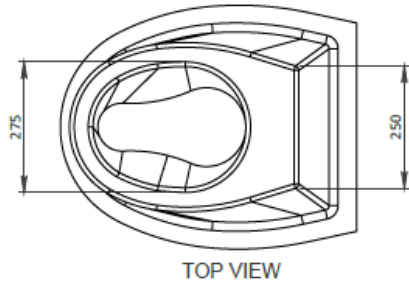
PDF FILE PATH: S:\Products\Environmental\Marketing Environmental\Hybrid Toilet System\Pedestals\Non Flush

Dimensions are in millimetres (mm) unless noted.

**GOUGH  
PLASTICS**

# HYBRID TOILET SYSTEM - NON FLUSH STANDARD PEDEST & DROPPER TUBE DETAILS

**TOLERANCES**  
UNLESS NOTED OTHERWISE  
PLEASE ALLOW BELOW TOLERANCES  
DIMENSIONS < 200mm - ALLOW ± 5 mm  
DIMENSIONS 200 - 1000mm - ALLOW ± 10 mm  
DIMENSIONS > 1000mm - ALLOW ± 15 mm



DO NOT SCALE

0	13/01/2022	AS BUILT	MC	DH	
REV	DATE	REVISION DESCRIPTION	DRAWN	CHKD.	ENG.

**GOUGH  
PLASTICS**

A.C.N. 010 028 547  
Gough Industries Pty. Ltd.  
833 Ingham Road  
Bohle, Townsville  
P.O. Box 7570, Garbutt BC, Qld. 4814.  
Telephone 07 47747606  
www.gough.com.au

CLIENT LOGO

GTLI-0000-12

SCALE  
NTS A3

GOUGH PLASTICS DRAWING No.

GTLI-0000-12

REVISION

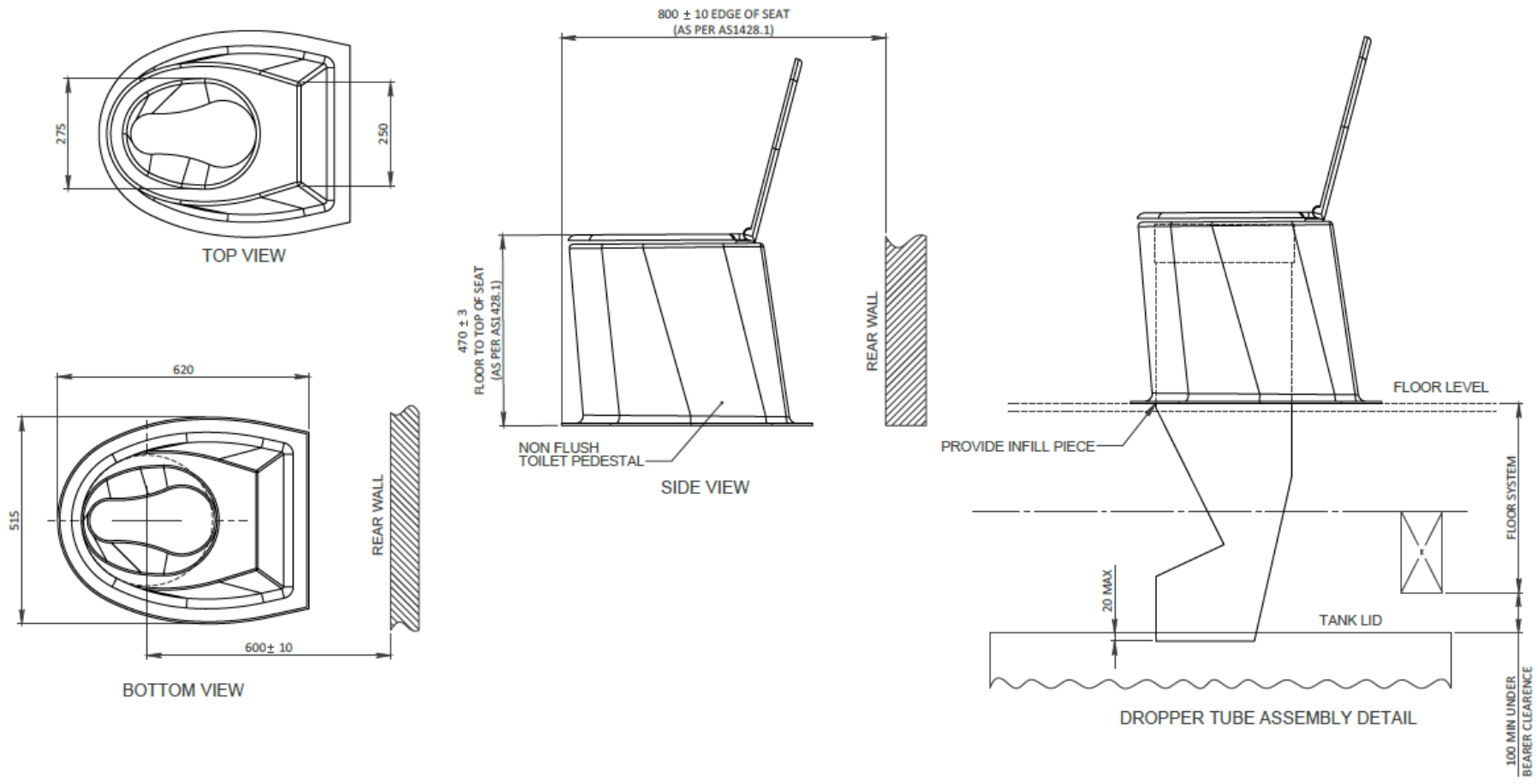
0

SOLIDWORKS: S:\Solidworks\Environmental\Hybrid Toilet Systems\Non Flush Pedestal\Non Flush Assem

PDF FILE PATH: S:\Products\Environmental\Production Environmental\Hybrid Toilet Systems\Installation & Maintenance (non QA)\Non Flush

# HYBRID TOILET SYSTEM - NONFLUSH DISABLED PEDESTAL & DROPPER TUBE DETAILS

**TOLERANCES**  
UNLESS NOTED OTHERWISE  
PLEASE ALLOW BELOW TOLERANCES  
DIMENSIONS <200mm - ALLOW ± 5 mm  
DIMENSIONS 200 - 1000mm - ALLOW ± 10 mm  
DIMENSIONS >1000mm - ALLOW ± 15 mm



DO NOT SCALE

0	13/01/2022	AS BUILT	MC	DH		<p>A.C.N. 010 028 547 Gough Industries Pty. Ltd. 833 Ingham Road Bohle, Townsville P.O. Box 7570, Garbutt St, Qld. 4814. Telephone 07 47747606 www.gough.com.au</p>	CLIENT LOGO	GTLI-0000-12D		
							SCALE	NTS A3	GOUGH PLASTICS DRAWING No.	GTLI-0000-12D
REV	DATE	REVISION DESCRIPTION	DRAWN	CHKD.	ENG.	Dimensions are in millimetres (mm) unless noted.	SOLIDWORKS: S:\Solidworks\Environmental\Hybrid Toilet Systems\Non Flush Pedestal\Non Flush Assem	PDF FILE PATH: S:\Products\Environmental\Production Environmental\Hybrid Toilet Systems\Installation & Maintenance (non QA)\NonFlush		0